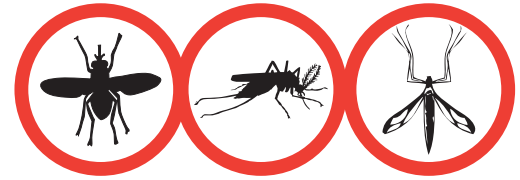


FOR EXTERNAL ANIMAL USE ONLY



POWER OF DEET

# DETER SPRAY

REPELLENT SPRAY FOR MIDGES, MOSQUITOES AND FLIES

Reg. No. G4243 (Act 36/1947)



**A WIPE and SPRAY on REPELLENT for protection against MIDGES (*Culicoides*), MOSQUITOES, BITING FLIES and FLIES on Horses.**

- Aids in the prevention of African Horse Sickness <sup>1</sup>
- DEET has a **significant repellent** effect against *Culicoides* midge species <sup>2</sup>
- **Immediate repellent** effect after a single administration <sup>2</sup>
- Daily application in the morning and afternoon - **significant repellence** of mosquitoes and **prevents feeding** with at least **92.8 %** <sup>2</sup>
- **Synergistic action** of 4 essential oils and DEET

**Contains:**

Diethyl Toluamide (DEET) 15,0 % *m/v*, Piperonyl Butoxide 1,0 % *m/v*, Eucalyptus oil, Tagete oil, D-Limonene, Alpha Terpineol

**References:**

1. Page, P., Labuschagne, K., Nurton, J., Venter, G. and Guthrie, A. (2009). Duration of repellence of N,N-diethyl-3-methylbenzamide, citronella oil and cypermethrin against *Culicoides* species when applied to polyester mesh. *Veterinary Parasitology*, 163(1-2), pp.105-109.
2. Clinvet International (2014). Evaluation of the repellence efficacy of a topical formulation against mosquitos on Horses. CV 14/071. Bloemfontein: Clinvet International, pp.1-6



Available in 750 ml & 5 l



**REGISTRATION HOLDER:** VetsBrands (Pty) Ltd.

**MARKETED BY:** Intervet South Africa (Pty) Ltd.

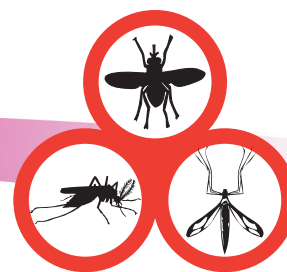
20 Spartan Road, Spartan, 1619, RSA | Tel: +27 (0) 11 923 9300 | Fax: +27 (0) 11 392 3158

www.msd-animal-health.co.za

ZA/DFR/0318/0004

# DETER

# SPRAY



REPELLENT SPRAY FOR MIDGES, MOSQUITOES AND FLIES  
AANSPUIT AFWEERMIDDEL VIR MUGGIES, MUSKIETE EN VLIË

Reg. No./Nr. G4243 (Act/Wet 36/1947)

## WARNINGS

HANDLE WITH CARE.

KEEP OUT OF REACH OF CHILDREN, UNINFORMED PERSONS AND ANIMALS.

Although this remedy has been extensively tested under a large variety of conditions, failure thereof may ensue as a result of a wide range of reasons. If this is suspected, seek veterinary advice and notify the registration holder.

## PRECAUTIONS

DEET must not be used on horses intended for use as food for human consumption. Avoid inhalation of spray mist. When applied as a spray this may result in a sneezing reaction in people applying the product. Wash hands after application. Prevent contamination of food, food utensils, grazing, drinking water, rivers, dams, drains etc. Dispose of empty containers according to local waste disposal regulations and do not reuse for any other purpose.

## DIRECTIONS FOR USE - USE ONLY AS DIRECTED

It is good sanitary practice to wear rubber or plastic gloves during application. **Deter Spray** must be applied early mornings and late afternoons during spring, summer and autumn when biting insect activity is high. Shake the bottle at least 10 times before each application. The pump spray applicator must be set to deliver a fine mist spray before application commences. The tip of the nozzle of the spray applicator must be held 30 cm away from the animal's skin. Brush animal's coat to remove excess dirt and dust. Apply spray to horse's coat to cover an area of 625 cm<sup>2</sup> per single pump spray. Make sure that all areas of the horse's body are covered. Pay particular attention to the legs and other areas where the skin is thin and hairless. Do not spray mist around the head and eyes. Dampen a soft clean cloth with the spray and apply to the head whilst avoiding contact with the eyes.

## NOTE

Horses may be ridden or worked immediately following application. Although application of **Deter Spray** will aid in the prevention of the transmission of insect-borne viral diseases such as African Horse Sickness, it is imperative to follow the correct vaccination programmes and other control measures. Store in a cool dark dry place at or below 20°C. Keep the container tightly closed.

## WAARSKUWING

HANTEER MET SORG.

HOU BUIITE BEREIK VAN KINDERS, ONINGELIGDE PERSONE EN DIERE.

Alhoewel hierdie middel breedvoerig onder 'n wye verskeidenheid toestande getoets is, mag dit faal as gevolg van verskeie redes. Indien dit vermoed word, raadpleeg 'n veearts en verwittig die registrasiehouer.

## VOORSORGMATREËLS

DEET moet nie gebruik word op perde wat vleis vir menslike verbruik produseer nie. Vermyn inaseming van spuitnewel. Wanneer die produk as 'n sproei aangewend word kan dit 'n niesreaksie veroorsaak by persone wat dit aanwend. Was hande na aanwending. Voorkom besoedeling van voedsel, eetgery, weiding, drinkwater, riviere, damme, dreine, ens. Doen weg met leë houers volgens plaaslike afvalbestuursregulasies en moenie hergebruik vir enige ander doeleindes nie.

## GEBRUIKSAANWYSINGS - GEBRUIK SLEGS SOOS AANGEDUI

Dit is goeie sanitêre praktyk om rubber of plastiese handskoene met aanwending te dra. **Deter Spray** moet aangewend word vroeg in die oggend en laatmiddag gedurende die lente, somer en herfs wanneer bytende insekte se aktiwiteit hoog is. Skud die bottel ten minste 10 keer voor elke nuwe aanwending. Die pomp sproeiaanwender moet gestel word om 'n fyn mis aanwending te verseker. Die punt van die spuitaanwender moet 30 cm vanaf die dier se vel gehou word tydens aanwending. Borsel diere se velkleed om 'n oormaat vuilgoed en stof te verwyder. Wend sproei aan perd se vel om 'n area van 625 cm<sup>2</sup> per enkele pomp sproeiaanwending te verseker. Maak seker dat alle areas van die perd se liggaam bedek word. Verseker dat die bene en ander areas waar die vel dun en haarloos is goed bedek word. Moet nie om die kop en oë spuit nie. Maak 'n sagte lap nat met die sproei en wend aan die area van die kop terwyl die oë vermy word.

## NOTA

Perde mag onmiddellik na aanwending gery of geoefen word. Alhoewel die aanwending van **Deter Spray** die oordrag van insekkoordraagbare virale siektes soos Perdesiekte mag help voorkom, is dit noodsaaklik om die korrekte inentingsprogram en ander beheermaatreëls te volg. Berg in 'n koel, donker, droë area, teen of benede 20 °C. Hou die houer dig toe.