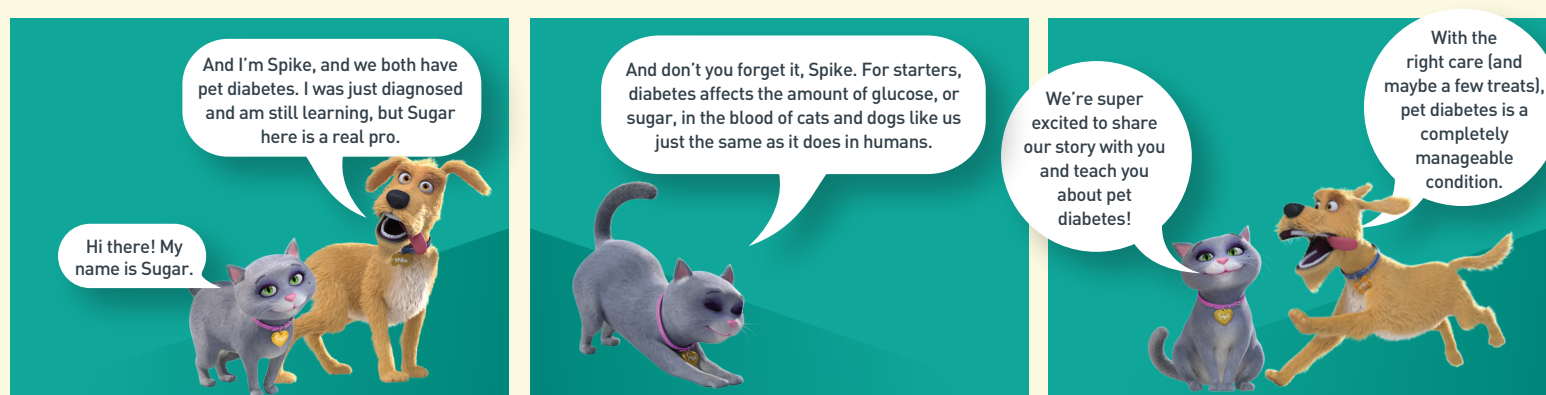


# PET DIABETES

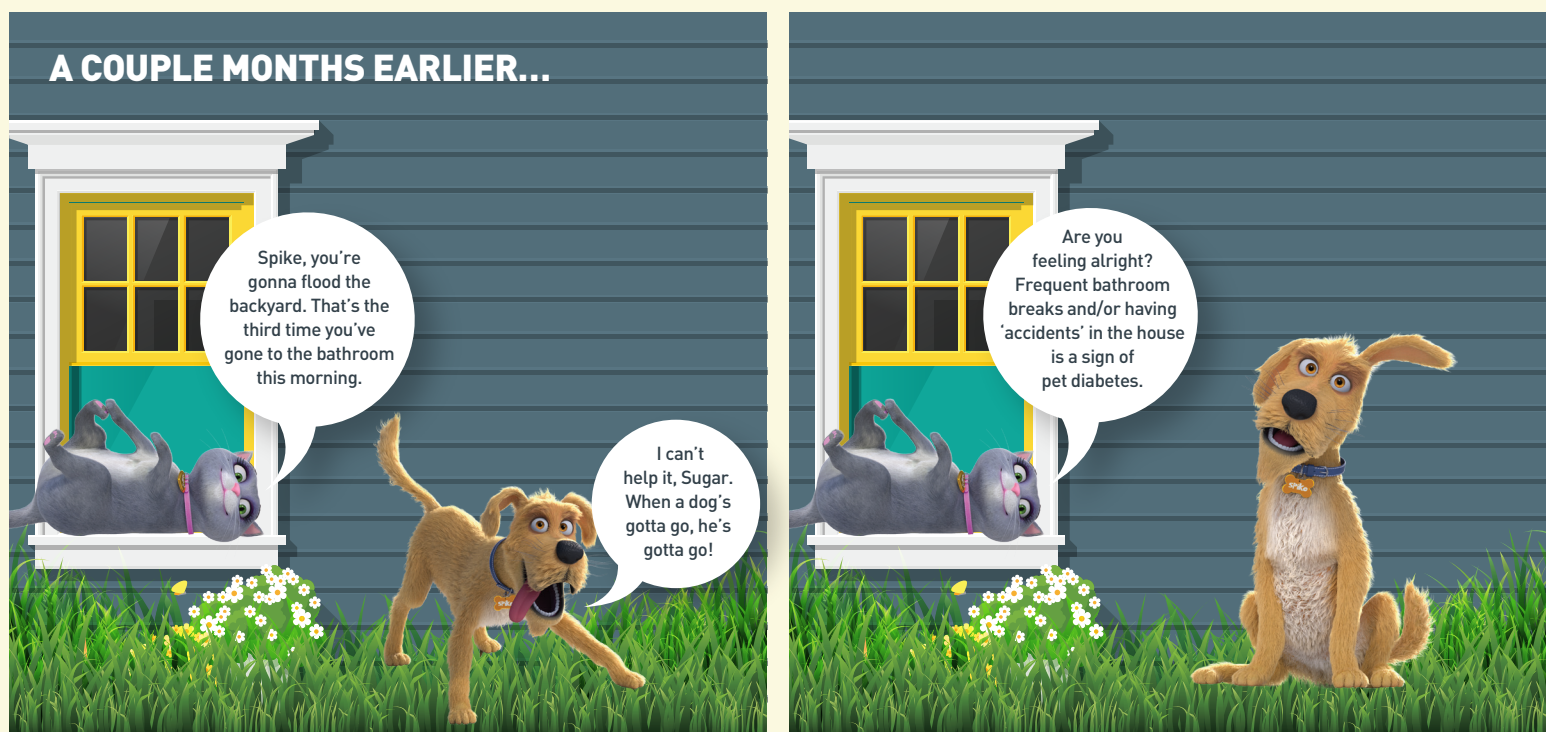
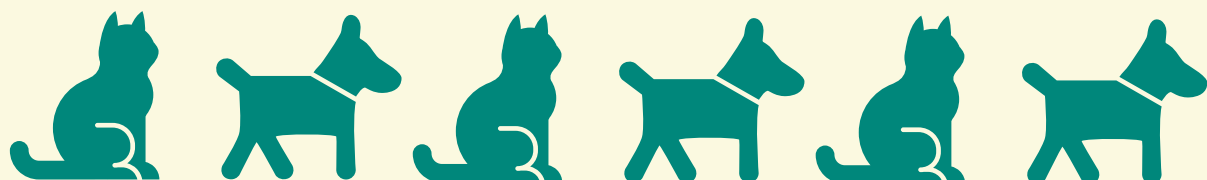
## Care & Control of Pet Diabetes with Sugar & Spike



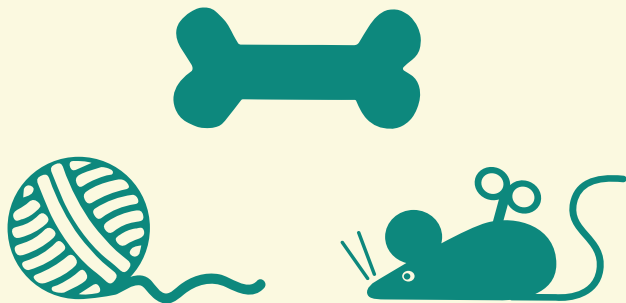
Pet diabetes affects approximately

**6 in 1,000**

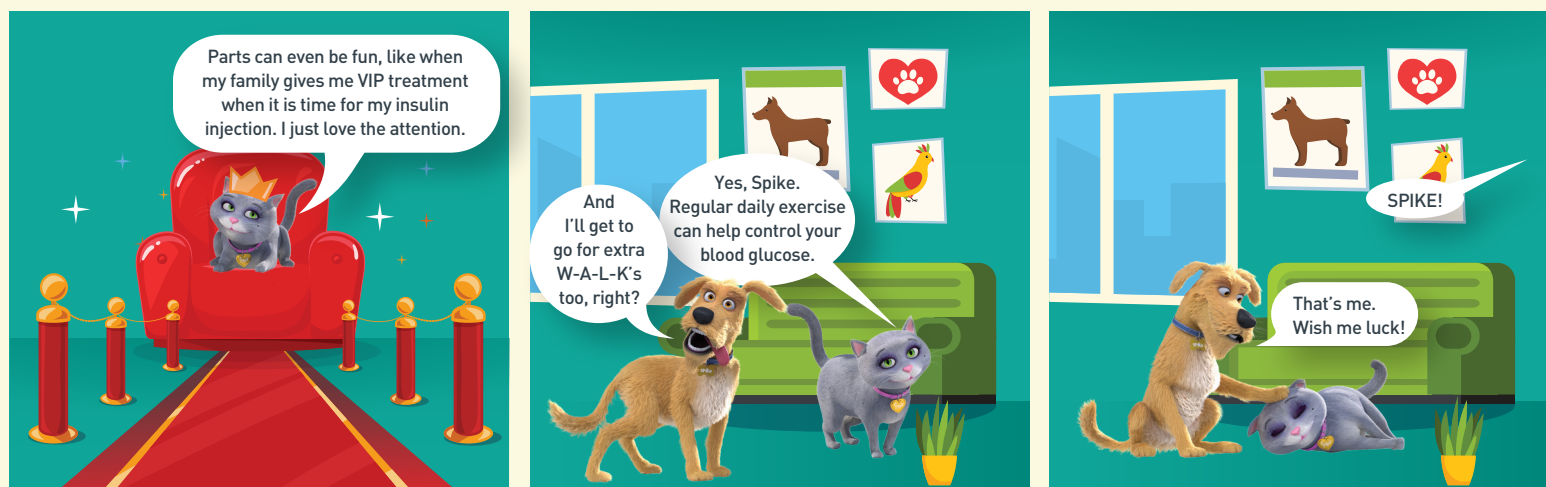
cats and dogs.<sup>1,2</sup>



With the proper care and management of their disease, diabetic dogs and cats have the **same expected lifespan** as non-diabetic dogs and cats of the same age and sex.<sup>3</sup>



**Regular daily exercise** for both diabetic dogs and cats is strongly recommended. Talk to your vet to develop an appropriate exercise program for your pet, depending on their overall health, age and weight.



For more information on pet diabetes and tips on how to help manage your pet's disease, visit [www.SugarandSpike.com](http://www.SugarandSpike.com). Or if you suspect that your four-legged friend may have diabetes, speak directly with your vet.

Intervet South Africa (Pty) Ltd, Reg. No. 1991/006580/07  
20 Spartan Road, Spartan, 1619, RSA  
Tel: +27 (0) 11 923 9300 [www.msd-animal-health.co.za](http://www.msd-animal-health.co.za)

REFERENCES  
1. Nelson RW. Canine diabetes mellitus. In: Ettinger SJ, Feldman EC, eds. Textbook of Veterinary Internal Medicine. 7th ed. St. Louis, MO: Saunders; 2010:1782-1796.  
2. Reusch C. Feline diabetes mellitus. In: Ettinger SJ, Feldman EC, eds. Textbook of Veterinary Internal Medicine. 7th ed. St. Louis, MO: Saunders; 2010:1796-1816.  
3. Fleeman, Linda; Rand, Jacqueline. Beyond Insulin Therapy: Achieving Optimal Control in Diabetic Dogs. Waltham FOCUS 2005;15:12-19.

**MSD**  
Animal Health