

**PATENTED**

# Solution<sup>®</sup> 3,5% L.A.

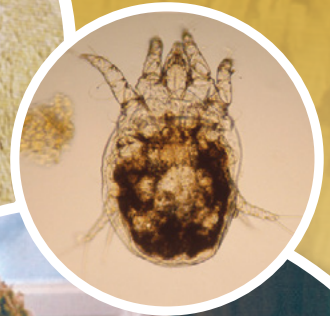
Reg. No. G3689 (Act 36/1947)  
Namibia Reg. No. V06/18.1.2/651

**IBULALA**  
*ibhula  
ngootofo  
olunye*

**IKHUSELA**  
*ibhula iibulawa  
ngokuphindaphineyo  
iinsuku ezifikelela  
ku-56*

**IPHUNGULA**  
*neentshulube (roundworm)*  
*Ngamandla angaphezu  
kuka- 90 %*

**ISOSOMBULULO  
SAKHO  
KWIBHULA**



*Iyafumaneka  
nge 50 ml nange  
500 ml  
1 ml ku 50 kg  
ubunzima*



**2**

**IMIXUBE EMIBILI EMMANDLA**

*Ivermectin 2,25 % PLUS  
Abamectin 1,25 %*