

PATENTED

Solution[®] 3,5% L.A.

Reg. No. G3689 (Act 36/1947)
Namibia Reg. No. V06/18.1.2/651

E BOLAYA
lophalo lwa
dihutshane ka
mokento
o le mongwe

TSHIRELETSO
e sireletsa go
boelela ga
lophalo go fitlha
malatsi a ka
tshwara 56

THIBELO YA GO IPOELETSA
e thibela, e ba e laola dibokwana
(roundworm)

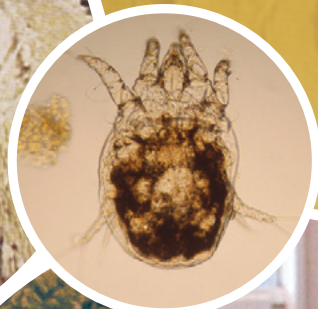
Ka bogale jo bo fetang 90 %

2

METSWAKO E MATLA
MO MOLEMONG O
Ivermectin 2,25 % PLUS
Abamectin 1,25 %



THARABOLOLO
YA GAGO
YA LOPHALO LWA
DIHUTSHANE



E bonwa ka
selekanyo sa 50
ml, le 500 ml
E kentwa ka 1 ml
mo boketeng jwa
50 kg